



Toogoodoo Creek Watershed Project

Working with Landowners to Improve Water Quality

The Problem

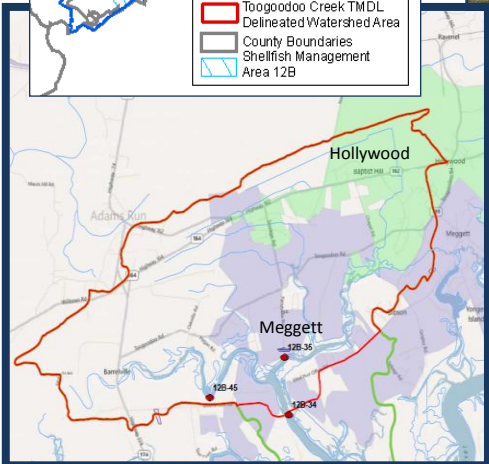
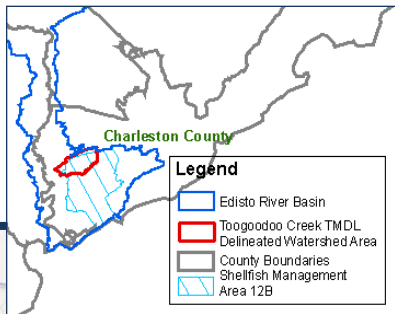
All of the shellfish beds in the Toogoodoo Creek Watershed surrounding Hollywood and Meggett are closed for harvesting because certain bacteria levels are too high. This bacteria comes from human and animal waste and can be carried into waterways when it rains, making shellfish unsafe to eat.

This bacteria typically gets into Toogoodoo, Lower Toogoodoo, and Swinton Creeks from faulty septic and sewer systems, livestock waste, pet waste, and wildlife. While not much can be done to control waste from wildlife, best management practices (BMPs) can be adopted to reduce impacts from the rest.

What We're Doing

The Charleston Soil and Water Conservation District received a grant to work with landowners to reduce bacteria levels and to improve and protect water quality. To do this, the District is providing the majority of costs for BMPs that reduce bacteria, such as repairing faulty septic systems and fencing cattle and horses out of streams.

The District will also work with Hollywood, Meggett, and other partners to educate residents through workshops, festivals, and schools, and will work with volunteers to establish new shellfish beds in the watershed. Reduced bacteria levels mean shellfish beds can reopen for harvesting. Water quality improvements may enhance property values, recreation uses, and overall quality of life!



Toogoodoo Creek Watershed Boundary



WANT TO KNOW MORE?
TO FIND OUT MORE ABOUT THE GRANT OR TO PARTICIPATE, CONTACT:
CHARLESTON SOIL AND WATER CONSERVATION DISTRICT
843-727-4160, EXT. 3
DEBBIE.ECKARD@SC.NACDNET.NET
WWW.CHARLESTONCONSERVATIONDISTRICT.COM

This project is funded by the US EPA under a Section 319 Grant through the SC Department of Health and Environmental Control (SC DHEC) and is being conducted by the Charleston Soil and Water Conservation District.

A CONSORTIUM OF GRANT PARTNERS